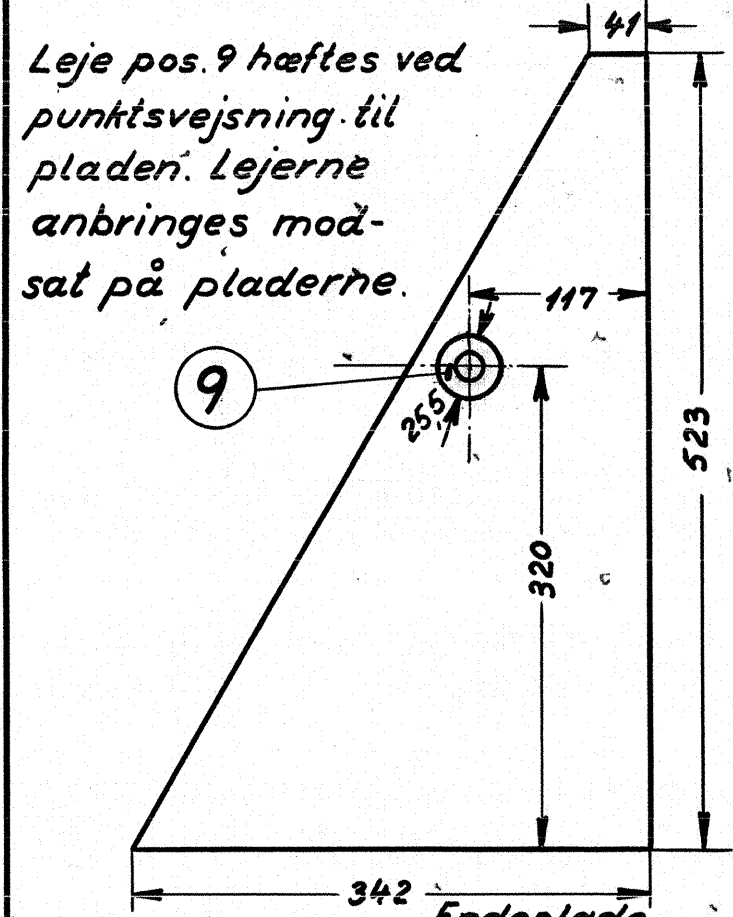
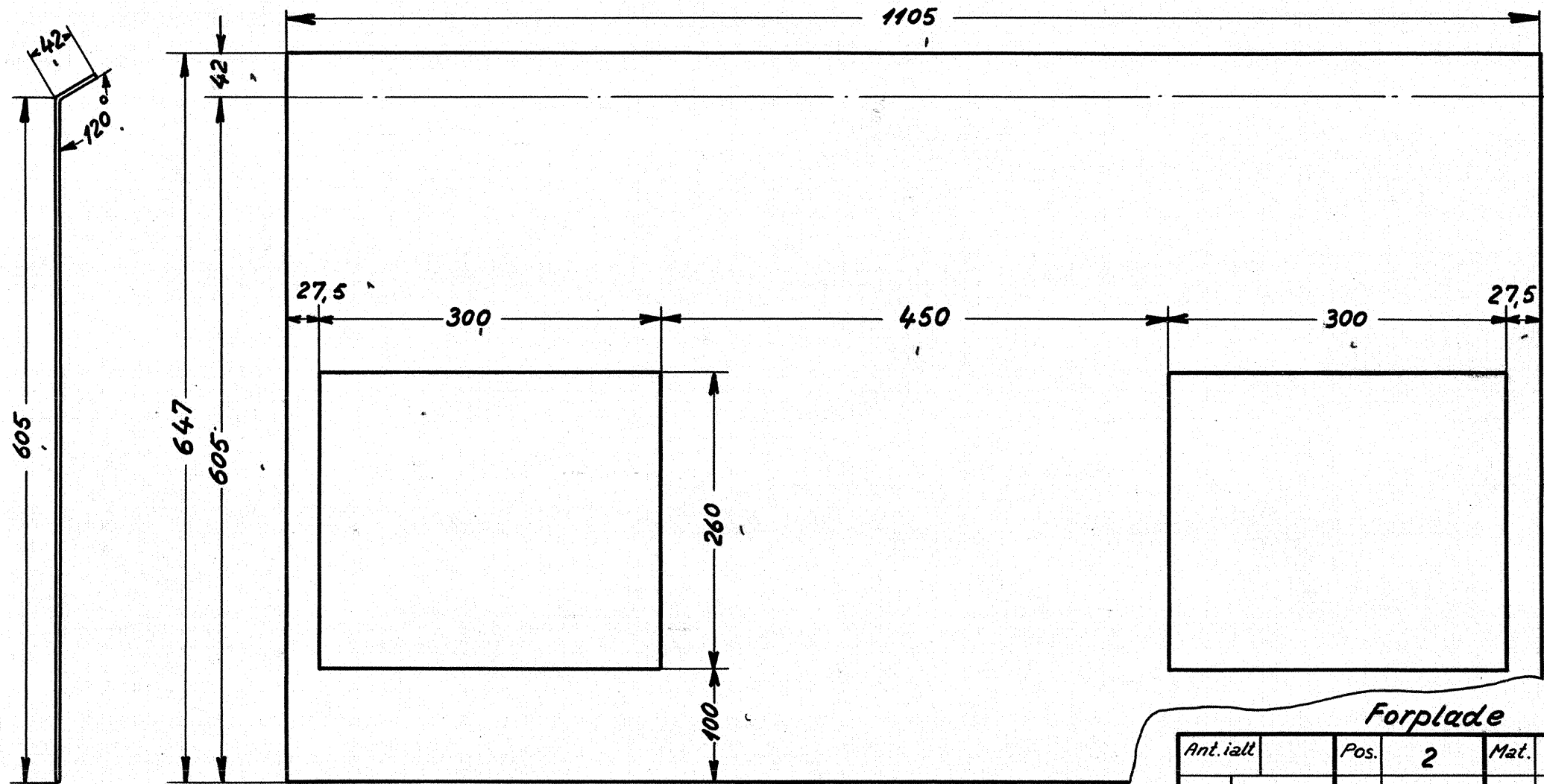


5/16" gevind huller bores efter skabelon, der lånes hos D.S.B.

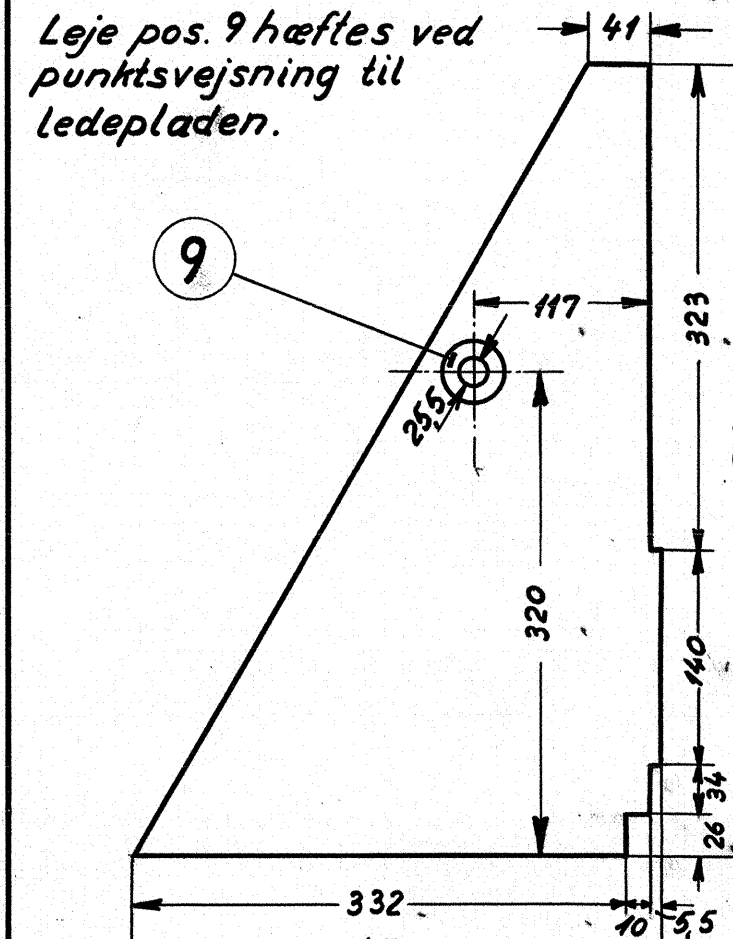
Bundplade				
Ant. i alt	Pos.	Mat.	St. 37	
	1		Stkl.	Tegn.
	1		6941	18W-21.830.



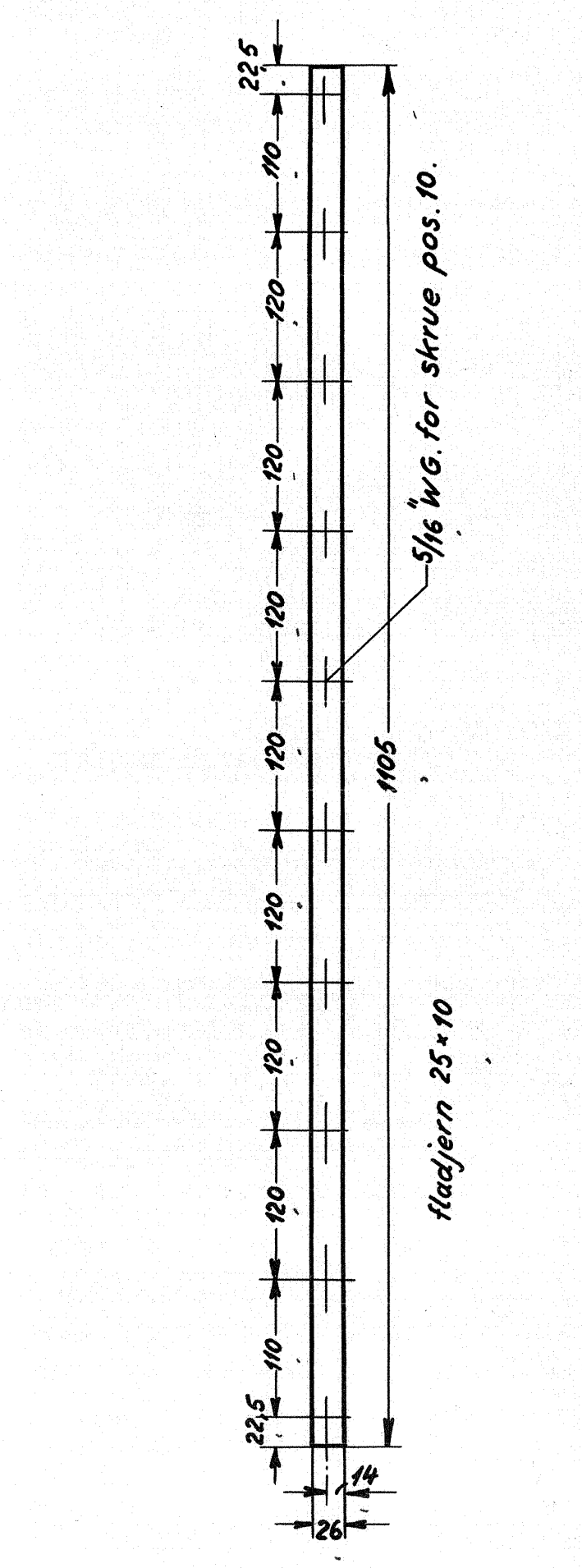
Endeplade				
Ant. i alt	Pos.	Mat.	St. 37	
	3		Stkl.	Tegn.
	3		6941	18W-21.830.



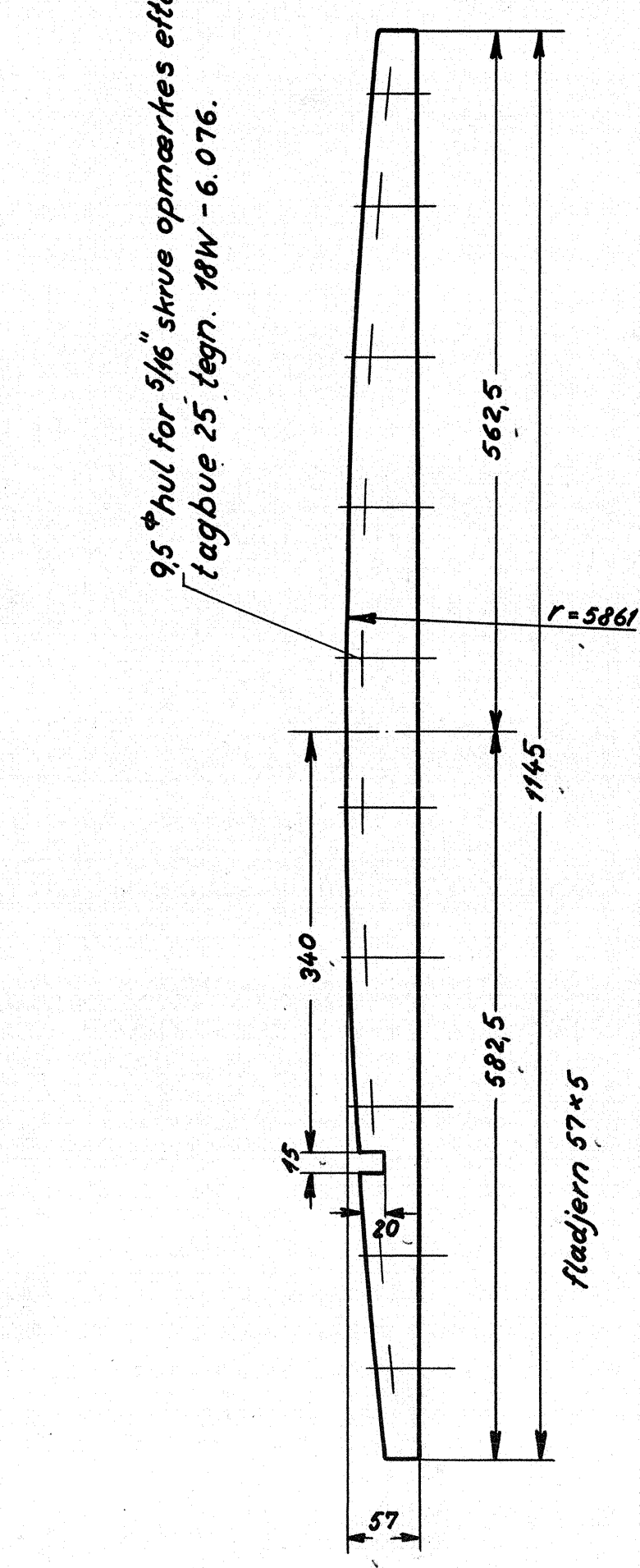
Forplade				
Ant. i alt	Pos.	Mat.	St. 37	
	2		Stkl.	Tegn.
	2		6941	18W-21.830.



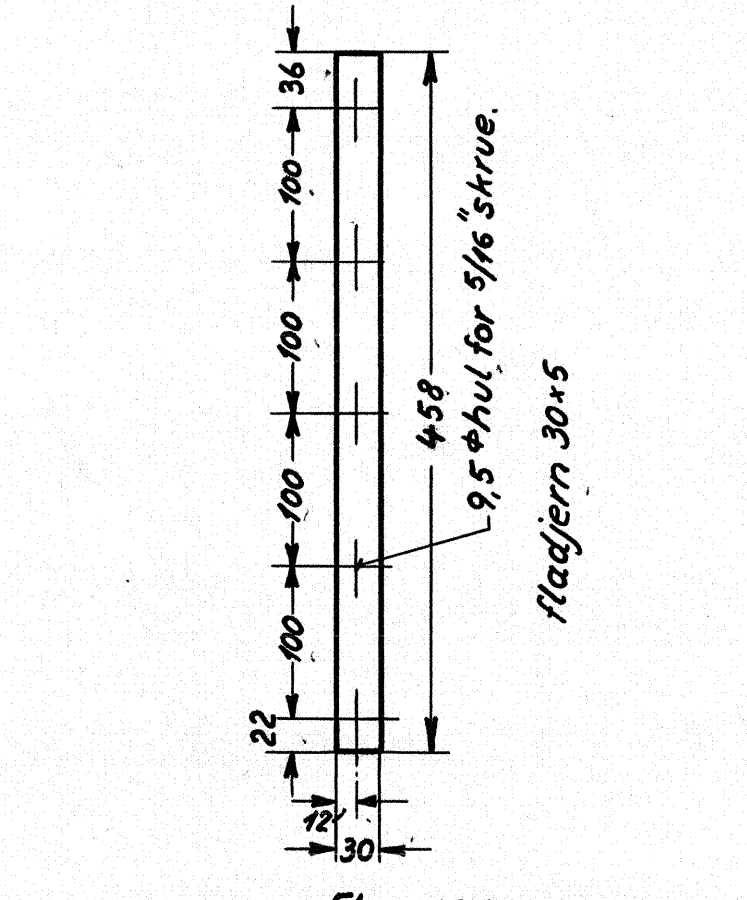
Leje				
Ant. i alt	Pos.	Mat.	St. 37	
	9		Stkl.	Tegn.
	9		6941	18W-21.830.



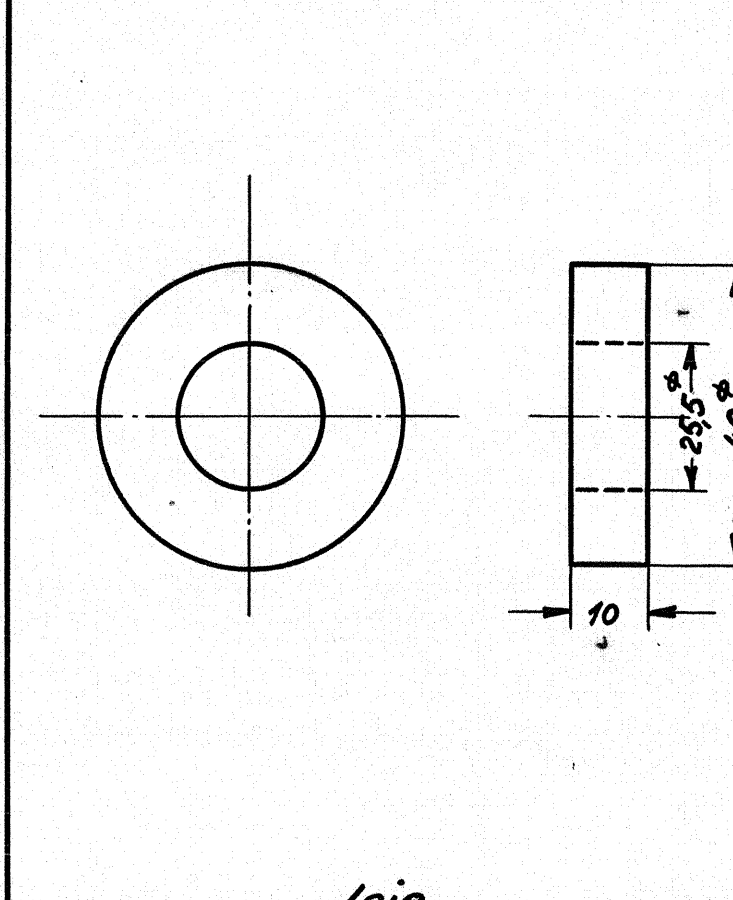
Flange				
Ant. i alt	Pos.	Mat.	St. 37	
	5		Stkl.	Tegn.
	5		6941	18W-21.830.



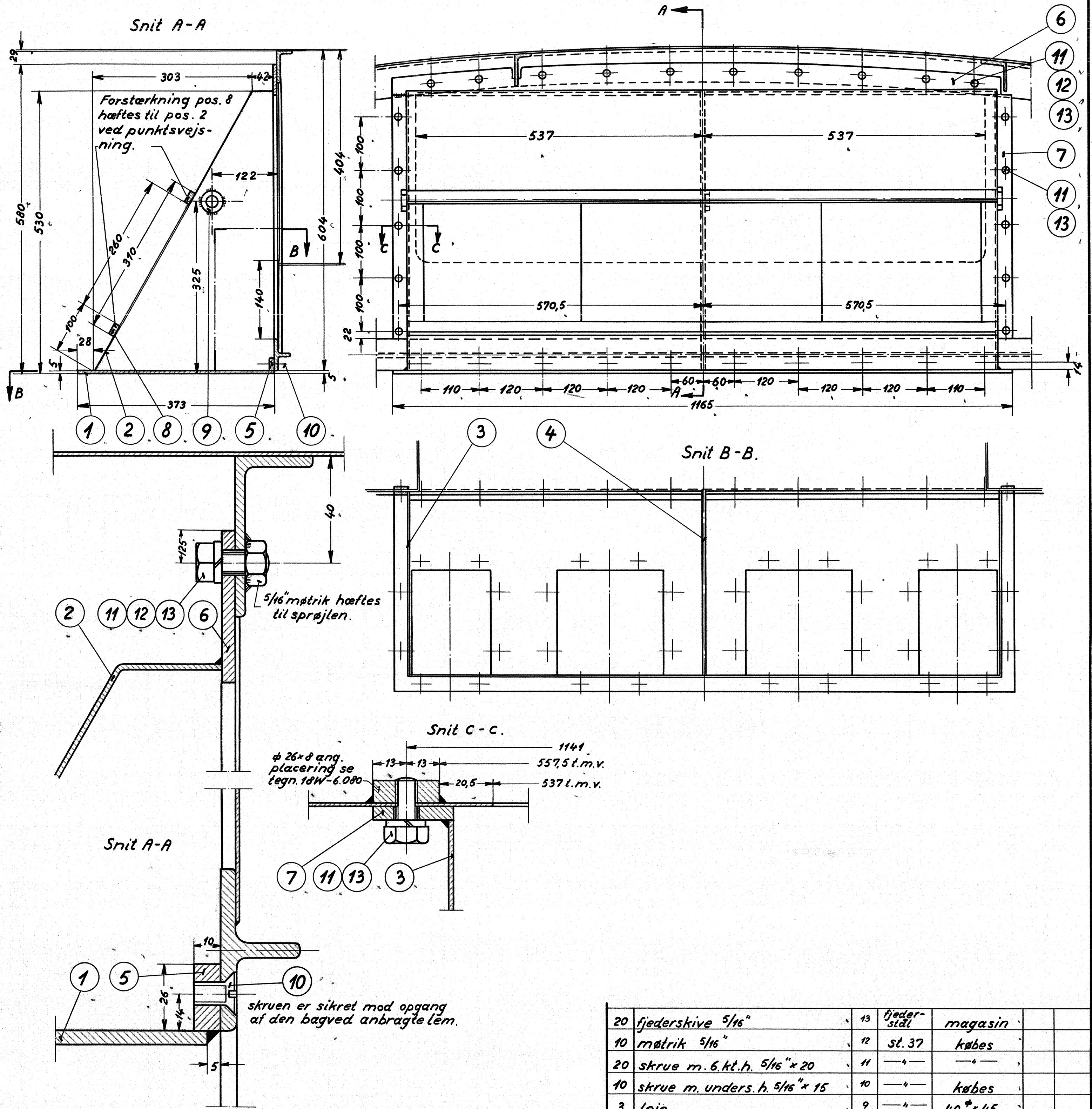
Flange				
Ant. i alt	Pos.	Mat.	St. 37	
	6		Stkl.	Tegn.
	6		6941	18W-21.830.



Flange				
Ant. i alt	Pos.	Mat.	St. 37	
	7		Stkl.	Tegn.
	7		6941	18W-21.830.



Leje				
Ant. i alt	Pos.	Mat.	St. 37	
	9		Stkl.	Tegn.
	9		6941	18W-21.830.



Stk.	Belegelse	Pos.	Material kvalit.	Material nr. eller materiale størrelse	r2	Færdig vægt/stk.
20	fjeder-skive 5/16"	43	fjeder-stål	magasin		
10	møtrik 5/16"	72	st. 37	købes		
20	skruer m. 6. kt. h. 5/16" x 20	11	"	"		
10	skruer m. unders. h. 5/16" x 15	10	"	købes		
3	leje	9	"	40* x 45		
2	forstærkning, fladj. 26 x 8 x 1105	8	"	L = 2220		
2	flange, fladj. 30 x 5	7	"	L = 925		
1	" " " 57 x 5	6	"	L = 1150		
1	flange, fladj. 26 x 10	5	"	L = 1110		
1	ledeplade	4	"	530 x 355 x 2		
2	endeplade	3	"	600 x 350 x 2		
1	forplade 1105 x 647 x 2	2	"	1110 x 655 x 2		
1	bundplade 1165 x 368 x 5	1	St. 37	1170 x 375 x 5		

Tegn. J.E.M. 9-2-51 Rev. 11/51  
 Kalk. B.F. 22-4-58 Norm. 11/51  
 Dato: \_\_\_\_\_ Retteelse: \_\_\_\_\_ Indeks: \_\_\_\_\_

Målestok: 1:1 1:5

**FRICHS**

Anvendelse: **Diesetel. 500/550 hk. motorvogn.** Stykliste nr. **6941.**

Tegningens benævnelse: **Samlekasse i maskinrum for dynamoventilation.** Tegningens nummer: **18W-21.830.**